



# Liberia IDSR Epidemiology Bulletin

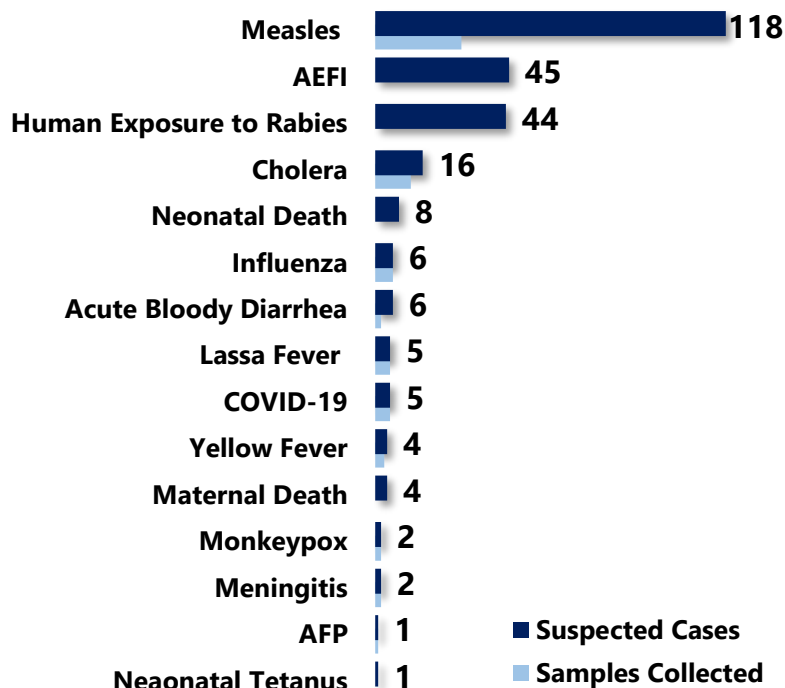
Epi-week 41 (October 10-16, 2022)

Country Population: 5,104,413 | Volume 17 Issue 41 | Oct 10-16, 2022

Data Source: CSOs from 15 Counties and Laboratory

## Highlights

Figure 1: Public Health Events Reported



## Keynotes and Events of Public Health Significance

- ♦ A total of 267 events of public health importance including 13 deaths were reported
- ♦ Completeness and timeliness of health facility reports were both 100%
- ♦ Ongoing Lassa fever outbreak in 4 Counties
- ♦ Ongoing Measles outbreak in 13 Counties
- ♦ Five new confirmed COVID-19 cases in 1 County

\*Adverse Events Following Immunization/Adverse Drug Reaction

## Reporting Coverage

Table 1: Health Facility Weekly IDSR Reporting Coverage, Liberia, Epi-week 41, 2022

County	Expected Reports From HF*	Reports Received	Received on Time	Completeness (%)	Timeliness (%)
Bomi	26	26	26	100	100
Bong	57	57	57	100	100
Gbarpolu	16	16	16	100	100
Grand Bassa	36	36	36	100	100
Grand Cape Mount	34	34	34	100	100
Grand Gedeh	24	24	24	100	100
Grand Kru	23	23	23	100	100
Lofa	66	66	66	100	100
Margibi	68	68	68	100	100
Maryland	27	27	27	100	100
Montserrado	326	326	326	100	100
Nimba	88	88	88	100	100
Rivercess	21	21	21	100	100
River Gee	20	20	20	100	100
Sinoe	37	37	37	100	100
<b>Liberia</b>	<b>869</b>	<b>869</b>	<b>869</b>	<b>100</b>	<b>100</b>

869(100%)  
Health facilities reported IDSR data

93 (100%)  
Health districts reported IDSR data

869(100%)  
Health facilities reported timely IDSR data

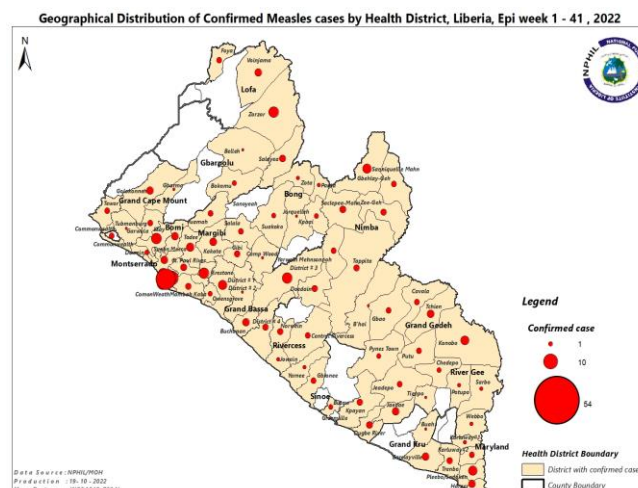
- ♦ The national target for weekly IDSR reporting is 80%. Health facility timeliness is monitored at the health district level
- ♦ All counties submitted weekly IDSR reports to the national level on time

Legend: ≥80 <80

## Vaccine-Preventable Diseases

### Measles

- ✎ One hundred eighteen (118) suspected cases were reported: Montserrado (31), Grand Bassa (27), Bong (15), Grand Kru (13), Nimba (10), Grand Gedeh (6), Rivercess (5), Grand Cape Mount (5), Sinoe (3), Lofa (2), and Maryland (1) Counties
- ✎ Twenty-nine (29) specimens collected: 25 pending testing, 4 not transported
- ✎ Vaccination status among suspected cases
  - Vaccinated: (49) 42%
  - Not vaccinated: (56) 47%
  - Unknown: (13) 11%
- ✎ Age distribution among suspected cases
  - < 5 years: (61) 52%
  - ≥ 5 years: (57) 48%
- ✎ Cumulatively, seven thousand eight hundred sixty (7,860) suspected cases have been reported including 80 deaths
  - (7,310) 93% confirmed:
    - ✓ Laboratory confirmed: (475/7,310) 6%
    - ✓ Clinically compatible: (558/7,310) 8%
    - ✓ Epidemiologically linked: (6,277/7,310) 86%
  - Non-measles discarded: 550
    - ✓ 40 tested positive for Rubella
- ✎ Proportion of samples collected: (1,232/7,860) 16%
- ✎ Proportion of samples tested: (1,025/1,232) 83%
- ✎ CFR: (80/7,310) 1%



**Geographical distribution of Measles Cases by epidemiological classification, health district, Liberia, Epi-week 1 – 41, 2022**

## Outbreak

### Measles: (Situation update from 13<sup>th</sup> December- 16<sup>th</sup> October 2022)

#### Montserrado County: Commonwealth, Bushrod, Somalia Drive, St. Paul, Central Monrovia, Todee, and Careysburg Districts

- ✎ Thirty-one (31) cases were reported from Commonwealth (13), Bushrod (9), Central Monrovia (5), Todee (3), and St Paul (1) Districts
- ✎ A total of 3,995 cases have been confirmed including sixty-five (65) deaths
  - Median age 6 (1month-59 years)
  - Not Vaccinated- (2,030/3,995) 51%
  - Vaccinated - (1,925/3,995) 48%
- ✎ CFR (65/3,995) 1.6%

#### Bong County: Suakoko, Zota, Jorquelleh, Salala, and Panta Districts (Situation update from 20<sup>th</sup> December 2021-16<sup>th</sup> October 2022)

- ✎ Nine (9) new cases were reported from Suakoko (6), and Salala (3) districts
- ✎ A total of 413 cases have been confirmed including two (2) deaths
  - Median age 8 (1 month - 38 years)
  - Vaccinated - (119/413) 29%
  - Not vaccinated - (109/413) 26%
  - CFR (2/413) 0.5%



# Liberia IDSR Epidemiology Bulletin

Epi-week 41 (October 10-16, 2022)

## Lofa County: Voinjama, Foyah, Zorzor, and Salayea Districts (Situation update from 21<sup>st</sup> January- 16<sup>th</sup> October 2022)

👉 Two (2) new cases were reported from Foyah District

👉 A total of 168 cases have been confirmed

- Median age: 10 (2 months-46years)
- Vaccinated: (158/168) 94%
- Not vaccinated: (5/168) 3%

## Nimba County: Gbehlay-Geh, Sacleapea-Mah, Zoe-Geh, Tappita, Yarwin Mehnsonnoh, and Sanniquellie-Mah Districts (Situation update from 20<sup>th</sup> January-16<sup>th</sup> September 2022)

👉 Ten (10) new cases were reported from Sanniquellie-Mah (5), Yarwin Mehnsonnoh (2), Gbehlay-Geh (2) and Tappita (1) Districts

👉 A total of 669 cases have been confirmed

- Median age 7 (2 months- 48years)
- Not Vaccinated: (413/669) 62%
- Vaccinated: (149/669) 22%

## Maryland County: Harper and Pleebo Districts (Situation update from 1<sup>st</sup> February- 16<sup>th</sup> October 2022)

👉 One (1) new case was reported from Pleebo District

👉 A total of 212 cases have been confirmed

- Median age 7 (7 months-48 years)
- Vaccinated: (26/212) 12%
- Not Vaccinated: (52/212) 25%

## Grand Bassa County: District #1, District #2, Owensgrove, and Buchanan Districts (Situation update from 22<sup>nd</sup> April -16<sup>th</sup> October 2022)

👉 Twenty-seven (27) new cases were reported from District #4 (17), District #3A&B (6), and District #2 (3), and Buchanan (1) Districts

👉 A total of 607 cases including three (3) deaths have been confirmed

- Median age 7 (1 month-45 years)
- Vaccinated: (218/607) 36%
- Not Vaccinated: (266/607) 43%
- CFR (3/607) 0.5%

## Bomi County: Klay District (Situation update from 14<sup>th</sup> March-16<sup>th</sup> October 2022)

👉 No new case was reported

👉 A total of 70 cases have been confirmed including 5 deaths

- Median age 7 (1 month-48 year)
- Vaccinated: (31/70) 44%
- Not Vaccinated: (19/70) 27%
- CFR (5/70) 7%

## Grand Kru: Trehn and Barclayville Districts (Situation update from 14<sup>th</sup> March – 16<sup>th</sup> October 2022)

👉 Thirteen (3) new cases were reported from Barclayville Districts

👉 A total of 118 cases have been confirmed

- Median age 9 (53 months-18 years)
- Vaccinated: (89/118) 75%
- Not Vaccinated: (32/118) 27%

## Rivercess: Doedain and Jowein Districts (Situation update from 16<sup>th</sup> March – 16<sup>th</sup> October 2022)

👉 Five (5) new cases were reported from Jowein (4), and Doedain (1) District

👉 A total of 35 confirmed cases have been confirmed including 1 death



# Liberia IDSR Epidemiology Bulletin

Epi-week 41 (October 10-16, 2022)

- Median age 5 (6 months-36 years)
- Vaccinated: (13/40) 33%
- Not Vaccinated: (7/40) 18%
- CFR: (1/40) 3%

## **Margibi County: Firestone, Gibi, Kakata, and Mamba Kaba Districts (Situation update from 21<sup>st</sup> February–16<sup>th</sup> October 2022)**

- 👉 No new case was reported
- 👉 A total of 565 cases have been confirmed
  - Median age 6 (4 months - 67 years)
  - Vaccinated: (286/565) 51%
  - Not Vaccinated: (166/565) 29%

## **Grand Cape Mount County: Gola Konneh, District (Situation update from 10<sup>th</sup> March –16<sup>th</sup> October 2022)**

- 👉 Five (5) new cases were reported from Gola Konneh District
- 👉 A total of 96 cases have been confirmed including 3 deaths
  - Median age 12 (2 months – 45 years)
  - Vaccinated: (81/96) 84%
  - Not Vaccinated: (13/96) 14%
  - CFR: (3/96) 3%

## **Grand Gedeh County: Tchien, Konobo, Bhai, and Gbao Districts (Situation update from 10<sup>th</sup> March–16<sup>th</sup> October 2022)**

- 👉 Five (5) new cases were reported from Tchien (2), Gbao (2) and Putu (1) Districts
- 👉 A total of 110 cases have been confirmed
  - Median age 6 (6 months-35 years)
  - Vaccinated (32/110) 29%
  - Not Vaccinated: (38/110) 35%

## **Sinoe: Gblonee, Dugbeh River, Kpanyan, and Jedepo Districts (Situation update from 19<sup>th</sup> May - 16<sup>th</sup> October 2022)**

- 👉 Three (3) new cases were reported from Jaedae (2), and Gblonee (1) Districts
- 👉 A total of 145 cases have been confirmed
  - Median age 6 (2 months-38 years)
  - Vaccinated: (79/145) 54%
  - Not Vaccinated (20/145) 14%

## **Public Health Response**

### **I Coordination**

- 👉 Ongoing monitoring of measles surveillance data with the provision of feedback to relevant stakeholders and developmental partners

### **II. Epidemiological Surveillance**

- 👉 Active case search and line listing of cases

### **III. Case Management**

- 👉 Isolation and treatment of cases

### **IV. Immunization**

- 👉 Gibi District, Margibi County conducted a mini measles campaign and vaccinated 76 children ages 9-59 months on September 29, 2022



# Liberia IDSR Epidemiology Bulletin

Epi-week 41 (October 10-16, 2022)

## V. Laboratory

- Three hundred ninety-eight (398) cases have been confirmed by the laboratory from 62 health districts in 15 counties

## VI. Risk Communication and Community Engagement

- Community engagement and health education continue in affected and surrounding communities

## VII. Challenges

- Lacked essential medications and medical supplies for case management
- Delay lab results from NPHRL

## Next steps

- NPHIL/partners to procure essential drugs for case management
- Develop national Measles preparedness and response guide.
- Develop and validate the national Measles and Rubella Surveillance guide.
- Develop and validate Measles SOPs.
- Continue social mobilization

## Acute Flaccid Paralysis (AFP)

- 👉 One case reported from Bong County
- 👉 Cumulatively, ninety-five (95) cases have been reported
  - 61 tested negatives
  - 34 pending testing

## Neonatal Tetanus

- 👉 One (1) case reported from Grand Bassa County
- 👉 Cumulatively, forty-three (43) clinically diagnosed cases reported

## Influenza-Like Illnesses

### Coronavirus Disease (COVID-19)

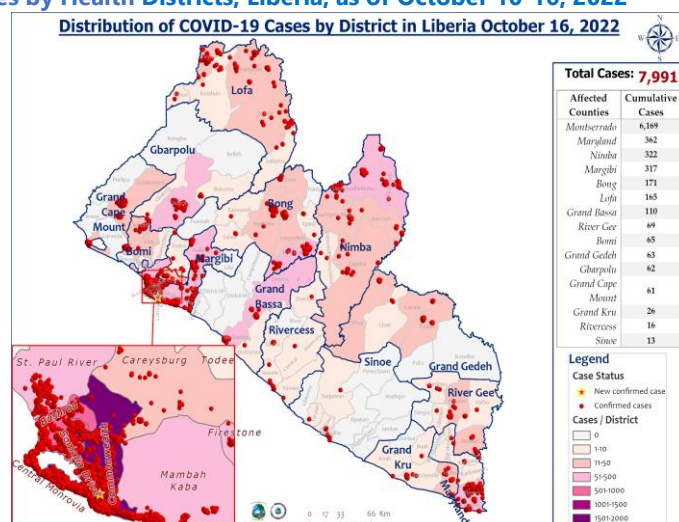
#### Outbreak

- 👉 Five (5) new confirmed cases were reported from Montserrado (5) County
- 👉 A total of one thousand eighty-one (1,081) confirmed cases have been reported since epi week 1
- 👉 Cumulatively, seven thousand nine hundred ninety-one (7,991) confirmed cases, including 294 deaths
  - 601 healthcare workers
- 👉 A total of 17,827 contacts have been generated
  - 1,772 healthcare workers

## Public Health Actions

- 👉 Weekly IMS coordination meeting ongoing.
- 👉 Surveillance activities including active case search and case investigation on-going in the affected county using WHO interim guidelines
- 👉 Case management ongoing for confirmed cases

**Figure 2: Geographical Distribution of Laboratory Confirmed COVID-19 Cases by Health Districts, Liberia, as of October 10-16, 2022**





# Liberia IDSR Epidemiology Bulletin

Epi-week 41 (October 10-16, 2022)

✎ Compulsory testing among outgoing travelers as required by the country of destination ongoing

## Severe Acute Respiratory Illness (SARI)

✎ Zero case reported

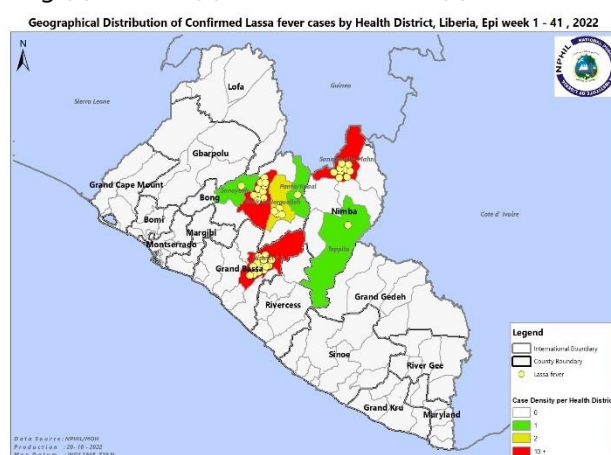
## Influenza

- ✎ Six (6) cases were reported from Montserrado County
- ✎ Cumulatively, fifty-three (53) cases have been reported

## Viral Hemorrhagic Diseases

### Lassa fever

- ✎ Five (5) suspected cases were reported from Montserrado (2), Bong (1), Nimba (1), and Grand Bassa (1) counties
- ✎ Five specimens were collected: 2 tested positive, 2 negative and 1 pending
- ✎ Cumulatively, one hundred forty-four (144) suspected cases have been reported including 22 deaths
  - Fifty-one (51) confirmed cases were recorded including 16 deaths
  - Eighty-nine (89) negatives
  - Case Fatality Rate: (16/51) 31%
  - Proportion of suspected cases with sample collected (143/144) 99%
  - Proportion of suspected cases with sample tested (140/143) 97%
    - 2 samples rejected (inadequate specimen, wrong packaging)
    - 1 not collected



**Geographical distribution of confirmed Lassa fever cases by Health District, Liberia, Epi-week 1-41, 2022**

## Outbreak

### Lassa fever disease: (Sitrep update as of October 16, 2022)

- ✎ Two new confirmed cases were reported from Grand Bassa and Montserrado Counties
- ✎ Seventy-six (76) contacts under 21 days' follow-up
- ✎ Cumulatively, fifty-one (51) laboratory-confirmed cases including 16 deaths reported (CFR=31%)

### Grand Bassa: District #3A&B

- ✎ One new confirmed case reported
  - A 13-year-old female from Compound #3, District 3 #A&B
  - Onset of symptom October 10, 2022. The case sought treatment at LAC hospital on October 12, 2022 and presented with Fever, weakness, vomiting and myalgia
  - Specimen was collected October 12, 2022 and sent to NPHRL on October 14, 2022
  - Specimen got tested on October 17, 2022 and released to the county same day
  - A total of 5 contacts line listed
- ✎ Cumulative confirmed cases: twenty-one (21)
  - CFR (6/21) 29%
- ✎ District that has reported confirmed cases since this year
  - District 3A&B
- ✎ Cumulatively, 97 contacts generated since this year
  - Seventy-four (74) contacts completed monitoring while twenty-three (23) contacts under 21 days follow up





# Liberia IDSR Epidemiology Bulletin

Epi-week 41 (October 10-16, 2022)

## Public Health Measures

- 👉 NPHIL and MOH providing technical support to county
  - Health workers and visitors are encouraged to enhance IPC practices by regular washing of hands
  - Limited community engagement

## Montserrado: Central Monrovia

- 👉 One new confirmed case reported
  - A 14-year-old male from Benson Street, Central Monrovia District
  - Onset of symptom October 1, 2022. The case sought treatment at J.F.K Memorial hospital on October 14, 2022 and presented with
  - Specimen was collected October 14, 2022 and sent to NPHRL on October 14, 2022
  - Specimen got tested on October 17, 2022 and released to the county same day
  - A total of 23 contact line listed
- 👉 Cumulatively confirmed cases: one (1)
- 👉 Cumulatively, 23 contacts generated for the first outbreak

## Nimba: Sanniquellie-Mah District

- 👉 No new confirm case reported
- 👉 Cumulative confirmed cases: eleven (11)
  - CFR (7/11) 64%
- 👉 Districts that have reported confirmed cases since this year
  - Sanniquellie-Mah: 10 cases (6 deaths)
  - Tappita: 1 case (death)
- 👉 Cumulatively, 191 contacts including 115 HCWs have been generated since this year
  - 172 contacts completed monitoring while 19 under 21 days follow up

## Public Health Measures

- 👉 NPHIL and MOH providing technical support to county
  - Health workers and visitors are encouraged to enhance IPC practices by regular washing of hands
  - Limited community engagement

## Bong County: Suakoko District

- 👉 No new confirmed case reported
- 👉 Cumulative confirmed cases: eighteen (18)
  - CFR: (3/18) 17%
- 👉 Districts that have reported confirmed cases since this year
  - Suakoko District: 13 cases (3 deaths)
  - Jorquellah District: 3 cases
  - Sanoyea District: 1 case
  - Kpaai District: 1 case
- 👉 Cumulatively, 165 contacts including 113 HCWs have been recorded since this year
  - 174 contacts completed monitoring and 10 under 21 days follow up

## Public Health Measures

- 👉 Risk communication interventions
  - Daily health talk in all health facilities on priority diseases
  - Airing of LF preventive and control messages
- 👉 Case Management
  - Isolated and managed cases
- 👉 Surveillance
  - Active case search ongoing in the affected health districts
  - Heighten surveillance in all districts



# Liberia IDSR Epidemiology Bulletin

Epi-week 41 (October 10-16, 2022)

- Daily situational reports are shared regularly at the national level

## Yellow fever

- 📁 Four (4) cases were reported from Sinoe, Grand Gedeh, Grand Cape Mount, and Rivercess Counties
- 📁 Three specimens were collected and pending testing
- 📁 Cumulatively, seventy-four (74) suspected cases have been reported
  - Proportion of suspected cases with sample collected (65/74) 88%
  - Proportion of suspected cases with sample tested (57/65) 88%
  - Samples pending testing (5/65) 8%
  - Samples not transported (3/65) 5%

## Diarrheal Diseases

### Acute Bloody Diarrhea (Suspected Shigellosis)

- 📁 Six (6) suspected cases were reported from Grand Gedeh (2), Rivercess (2), Margibi (1), and Grand Bassa (1) Counties
- 📁 Two specimens were collected and pending testing
- 📁 Cumulatively, three hundred eighty (380) suspected cases reported
- 📁 One hundred eighty-eight (188) specimens collected; 144 received by the lab
  - 119 tested negatives
    - 1 positive (Grand Gedeh)
    - 11 rejected (inadequate specimen, wrong packaging)
  - 13 specimens discarded

### Severe Acute Watery Diarrhea (Suspected Cholera)

- 📁 Sixteen (16) suspected cases were reported from Grand Kru (10), Montserrado (4), Bong (1), and Maryland (1) counties
- 📁 Twelve (12) specimens were collected but 10 not transported
- 📁 Cumulatively, two hundred ninety-eight (298) suspected cases reported
  - 172 specimens collected; 102 received by the lab
    - 74 tested negatives
  - 5 rejected (inadequate specimen, wrong packaging, specimen not label)
  - 23 specimens not tested

## Other Reportable Diseases

### Animal bite (Human Exposure to Rabies)

- 📁 Forty-four (44) animal bite cases were reported: Montserrado (11), Nimba (9), Maryland (4), Bong (4), Rivercess (3), Grand Kru (3), River Gee (2), Margibi (2), Grand Gedeh (2), Bomi (2), Gbarpolu (1) and Grand Bassa (1) Counties
- 📁 Persons received Post Exposure Prophylaxis (PEP) (7/44) 16%
- 📁 Cumulatively, one thousand seven hundred ten (1,710) animal bite cases reported
  - Dog bites account for 100%
    - 1-4 doses (PEP) administered to (314/1,710) 18% of patients

## Public Health Actions

- 📁 Ongoing monitoring and follow-up of cases
- 📁 Quarantined (5/44) 11% of suspected rabid dogs

## Meningitis

- 📁 Two (2) cases (including one death) reported from Grand Kru County
- 📁 specimens were collected and pending testing
- 📁 Cumulatively, twenty-nine (29) suspected cases reported





# Liberia IDSR Epidemiology Bulletin

Epi-week 41 (October 10-16, 2022)

📁 One (1) confirmed

## Monkeypox

- 📁 Two (2) new suspected cases were reported from Maryland and Grand Bassa Counties
- 📁 Specimens were collected: 1 tested negative and 1 pending
- 📁 Cumulatively, fifty-two (52) suspected cases reported

## Events of Public Health Importance

### Maternal Mortality

📁 Four (4) deaths were reported from Montserrado (2), Bong (1), and Grand Bassa (1) Counties  
Cause of death: Postpartum hemorrhage, Eclampsia, Rupture Uterus, and Retained placenta

- 📁 Reported from:
  - Health facility: (3) 75%
  - Community: (1) 25%
- 📁 Cumulatively, two hundred thirty-five (235) deaths have been reported
  - Proportion of deaths reviewed (49/235) 21%
  - Proportion of community deaths (23/235) 10%
    - Proportion of community deaths reviewed: (8/23) 35%

### Neonatal Mortality

📁 Eight (8) deaths were reported: Nimba (2), Maryland (2), Bong (2), Lofa (1), and Grand Kru (1) Counties  
Causes of death: Birth asphyxia (5), Sepsis (2), Aspiration Pneumonia (1)

- 📁 Reported from:
  - Health facility: 6 (75%)
  - Community: 2 (25%)
- 📁 Cumulatively, six hundred thirty (630) deaths have been reported
  - The proportion of deaths reviewed (79/630) 13%
  - Proportion of community deaths (28/630) 4%
    - Proportion of deaths reviewed from the community (8/28) 29%

### Adverse Events Following Immunization (AEFI)/Adverse Drug Reaction (ADR)

- 📁 Forty-five (45) cases were reported: Grand Gedeh (17), Rivercess (10), Grand Cape Mount (6), Grand Bassa (6), Lofa (4), Bomi (1), and Grand Kru (1) Counties
  - Related vaccines:
    - COVID-19 (40/45) 89%
    - Penta-3 (5/45) 11%
- 📁 Cumulatively, five hundred thirteen (513) events were reported with (361/513) 70% related to COVID-19
- 📁 Proportion of COVID-19 vaccine
  - J&J vaccine – (263/361) 65%
  - AstraZeneca – (6/361) 2%
  - Pfizer – (92/361) 25%
- 📁 Proportion of other vaccine-related events – (152/513) 30%

### Public Health Actions

- 📁 All events were investigated, categorized as *non-serious AEFI, and symptomatically treated*
- 📁 Active case search and community engagement ongoing



# Liberia IDSR Epidemiology Bulletin

Epi-week 41 (October 10-16, 2022)

## Border Surveillance Update

**Table2: Border activity at the PoE for Incoming and Outgoing Travelers, Liberia, Epi week 41, 2022**

📌 A total of 4,645 travelers were recorded for the week with incoming travelers accounting for 50% (2,307/4,645)

Type of Ports	Point of Entry	Weekly total	Arrival	Departure	Total travelers with YB	Yellow Book Damage	Card Replaced	Vaccinated against YF & Issued	Alerts detected/ Verified	COVID-19 Reactive	Evidence of COVID-19 vaccination card/certificate
Airport	James S. Paynes	142	83	59	142	0	0	0	0	0	31
	Robert Int'l Airport	3010	1345	1665	2978	29	0	3	0	0	2994
Seaport	Freeport of Monrovia	200	100	100	200	0	0	0	0	0	200
	Buchanan Port	130	65	65	130	0	0	0	0	0	130
Land Crossing	Bo Water Side	553	368	185	480	0	38	35	0	0	100
	Ganta	348	212	136	321	27	0	0	0	0	70
	Yekepa	172	96	76	158	14	0	0	0	0	56
	Loguatu	90	38	52	58	32	0	0	0	0	35
<b>Total</b>		<b>4,645</b>	<b>2,307</b>	<b>2,338</b>	<b>4,467</b>	<b>102</b>	<b>38</b>	<b>38</b>	<b>0</b>	<b>0</b>	<b>3,616</b>

**Note: Yellow book issue for both arrival and departure; Vaccination coverage for both arrival and departure**

## Public Health Measures

### National level

- 📌 One hundred and thirty-three (133) health staffs were trained in IDSR 3<sup>rd</sup> edition Margibi County
- 📌 Trained one hundred-forty health professionals Rapid Response at district and county level (Margibi and Bomi)
- 📌 Operational Activity
  - Continued support for operational activities ongoing

### County-level

#### 📌 Surveillance

- Publication of situational reports
- Active case search ongoing in affected and surrounding communities

#### 📌 Case Management

- Administration of PEP and ribavirin
- Management of measles cases ongoing

# Appendix

## Summary of Immediately Reportable Diseases, Conditions, and Events by County

			Bomi	Bong	Gbarpolu	Grand Bassa	Grand Cape Mount	Grand Gedeh	Grand Kru	Lofa	Margibi	Maryland	Montserrado	Nimba	Rivercess	River Gee	Sinoe	Total Weekly	Cumulative Reported	Cumulative Lab-confirmed	
No. of Expected Health District			4	9	5	8	5	6	5	6	4	6	7	6	6	6	10	93			
No. of Health District Reported			4	9	5	8	5	6	5	6	4	6	7	6	6	6	10	93			
Vaccine Preventable Diseases	Acute Flaccid Paralysis (Suspected Polio)	A	0	1	0	0	0	0	0	0	0	0	0	0	0	0	0	0	1	94	0
		D	0	0	0	0	0	0	0	0	0	0	0	0	0	0	0	0	0	0	0
	Measles	A	0	15	0	27	5	6	13	2	0	1	31	10	5	0	3	118	7,644	457	
		D	0	0	0	0	0	0	0	0	0	0	0	0	0	0	0	0	0	77	0
	Neonatal Tetanus	A	0	0	0	1	0	0	0	0	0	0	0	0	0	0	0	0	1	40	0
		D	0	0	0	0	0	0	0	0	0	0	0	0	0	0	0	0	0	2	0
Yellow fever	A	0	0	0	0	1	1	0	0	0	0	0	0	1	0	1	4	69	0		
	D	0	0	0	0	0	0	0	0	0	0	0	0	0	0	0	0	0	0	0	
Viral Hemorrhagic Fever	Dengue fever	A	0	0	0	0	0	0	0	0	0	0	0	0	0	0	0	0	0	0	0
		D	0	0	0	0	0	0	0	0	0	0	0	0	0	0	0	0	0	0	0
	Ebola Virus Disease	A	0	0	0	0	0	0	0	0	0	0	0	0	0	0	0	0	0	0	0
		D	0	0	0	0	0	0	0	0	0	0	0	0	0	0	0	0	0	0	0
	Lassa fever	A	0	1	0	1	0	0	0	0	0	0	2	1	0	0	0	5	107	26	
		D	0	0	0	0	0	0	0	0	0	0	0	0	0	0	0	0	20	14	
Influenza-Like Illnesses	COVID-19	A	0	0	0	0	0	0	0	0	0	0	5	0	0	0	0	5	7,991	7,991	
		D	0	0	0	0	0	0	0	0	0	0	0	0	0	0	0	0	0	294	
	Influenza	A	0	0	0	0	0	0	0	0	0	0	6	0	0	0	0	6	34	0	
		D	0	0	0	0	0	0	0	0	0	0	0	0	0	0	0	0	0	0	
Diarrheal Diseases	Acute Bloody Diarrhoea (Shigellosis)	A	0	0	0	1	0	2	0	0	1	0	0	0	2	0	0	6	367	1	
		D	0	0	0	0	0	0	0	0	0	0	0	0	0	0	0	0	0	0	
	Severe Acute Watery Diarrhoea (Cholera)	A	0	1	0	0	0	0	10	0	0	1	4	0	0	0	0	16	274	0	
		D	0	0	0	0	0	0	0	0	0	0	0	0	0	0	0	0	0	0	
Events of Public Health Importance	Maternal Mortality	D	0	1	0	1	0	0	0	0	0	0	2	0	0	0	0	4	228		
	Neonatal Mortality	D	0	2	0	0	0	0	1	1	0	2	0	2	0	0	0	8	616		
	Adverse Events Following Immunization (AEFI)	A	1	0	0	6	6	17	1	4	0	0	0	0	10	0	0	45	434	0	
		D	0	0	0	0	0	0	0	0	0	0	0	0	0	0	0	0	0	0	
	Unexplained Cluster of Health Events/Disease	A	0	0	0	0	0	0	0	0	0	0	0	0	0	0	0	0	0	0	
		D	0	0	0	0	0	0	0	0	0	0	0	0	0	0	0	0	0	0	
Other Reportable Diseases	Monkeypox	A	0	0	0	1	0	0	0	0	0	1	0	0	0	0	0	2	48	2	
		D	0	0	0	0	0	0	0	0	0	0	0	0	0	0	0	0	0	0	
	Tuberculosis	A	0	0	0	0	0	0	0	0	0	0	0	0	0	0	0	0	0	0	
		D	0	0	0	0	0	0	0	0	0	0	0	0	0	0	0	0	0	0	
	Human Exposure to Rabies (Suspected Human Rabies)	A	2	4	1	1	0	2	3	0	2	4	11	9	3	2	0	44	1,623	0	
		D	0	0	0	0	0	0	0	0	0	0	0	0	0	0	0	0	1	0	
	Meningitis	A	0	0	0	0	0	0	2	0	0	0	0	0	0	0	0	2	26	1	
		D	0	0	0	0	0	0	0	0	0	0	0	0	0	0	0	0	0	0	
Neglected Tropical Diseases	Unexplained Cluster of deaths	A	0	0	0	0	0	0	0	0	0	0	0	0	0	0	0	0	0	0	
		D	0	0	0	0	0	0	0	0	0	0	0	0	0	0	0	0	0	0	
	Buruli Ulcer	A	0	0	0	0	0	0	0	0	0	0	0	0	0	0	0	0	0	0	
		D	0	0	0	0	0	0	0	0	0	0	0	0	0	0	0	0	0	0	
Yaws	A	0	0	0	0	0	0	0	0	0	0	0	0	0	0	0	0	0	0		
	D	0	0	0	0	0	0	0	0	0	0	0	0	0	0	0	0	0	0		
TOTAL			3	25	1	39	12	28	30	7	3	9	61	22	21	2	4	267	19695	0	

D = Dead A = Alive

## Notes

- 👉 **Completeness** refers to the proportion of expected weekly IDSR reports received (target:  $\geq 80\%$ )
- 👉 **Timeliness** refers to the proportion of expected weekly IDSR reports received by the next level on time (target:  $\geq 80\%$ ). Time requirement for weekly IDSR reports:
  - Health facility - required on or before 5:00pm every Saturday to the district level
  - Health district - required on or before 5:00pm every Sunday to the county level
  - County - required on or before 5:00pm every Monday to the national level
- 👉 **Non-polio AFP rate** is the proportion of non-polio AFP cases per 100,000 among the estimated population under 15 years of age in 2017 (annual target:  $\geq 2/100,000$ )
- 👉 **Non-measles febrile rash illness rate** refers to the proportion of Negative measles cases per 100,000 population
- 👉 **Annualized maternal mortality rate** refers to the maternal mortality rate of a given period less than one year and it is the number of maternal deaths per 100,000 live births
- 👉 **Annualized neonatal mortality rate** refers to the neonatal mortality ratio of a given period less than one year and it is the number of neonatal deaths per 1,000 live births
- 👉 **Epi-linked** refers to any suspected case that has not had a specimen taken for serologic confirmation but is linked to a laboratory confirmed case
- 👉 **Confirmed case** refers to a case whose specimen has been tested positive or reactive upon laboratory testing, or has been classified as confirmed by either epidemiologic linkage with a confirmed case, or clinical compatibility with the disease or condition

Epidemiological bulletin published with support from WHO and CDC

### For comments or questions, please contact

Ralph W. Jetoh, MD, MPH

#### Director

Infectious Disease and Epidemiology Division  
National Public Health Institute of Liberia  
Republic of Liberia

Email: [ralphica2000@gmail.com](mailto:ralphica2000@gmail.com)

Phone: +231 886526388/777372655

Website: [www.nphil.gov.lr](http://www.nphil.gov.lr)

## National Public Health Institute of Liberia (NPHIL)

### MISSION

To prevent and control public health threats by promoting healthy outcomes and serving as a source of knowledge

### VISION

A center of excellence to create health outcomes for Liberians through a strong preventive health system and expertise

## EDITORIAL TEAM

### DIDE / NPHIL

A. N. Mianah  
I. P. Pewu  
T. O. Yeabah  
J. S. Kokro  
E. Dwalu  
A.B. Corvah  
G. B. Williams  
S. K. Zayzay  
L. W. Colee  
M. Tegli  
T. L. Hall  
S. L. Flomo  
M. S. Quiah  
C. T. Yeah  
L. K. Seepoe  
J. O. Abel  
P. J. Thomas  
H. M. Sherman  
M.D. Vaye  
N. K. Dovillie  
A. Coker  
S. Nuwolo

Ministry of Health  
WHO Liberia Office

### Data sources

Data and information is provided by the fifteen County Surveillance Officers and National Public Health Reference Laboratory via regular weekly reports, telephone calls and email exchanges. Situations are evolving and dynamic therefore numbers stated are subject to change.